

**SUPPORT GUIDE FOR
NOKIA CONTENT COPIER
for the Nokia 6310i**

NOKIA

Contents

1. INTRODUCTION.....	3
2. SYSTEM REQUIREMENTS	3
3. USING THE NOKIA CONTENT COPIER.....	4

Copyright © Nokia. All rights reserved.

Reproduction, transfer, distribution or storage of part or all of the contents in this document in any form without the prior written permission of Nokia is prohibited.

Nokia and Nokia Connecting People are registered trademarks of Nokia Corporation. Other product and company names mentioned herein may be trademarks or tradenames of their respective owners.

Nokia operates a policy of continuous development. Nokia reserves the right to make changes and improvements to any of the products described in this document without prior notice.

Under no circumstances shall Nokia be responsible for any loss of data or income or any special, incidental, consequential or indirect damages howsoever caused.

The contents of this document are provided "as is". Except as required by applicable law, no warranties of any kind, either express or implied, including, but not limited to, the implied warranties of merchantability and fitness for a particular purpose, are made in relation to the accuracy, reliability or contents of this document. Nokia reserves the right to revise this document or withdraw it at any time without prior notice

The availability of particular products may vary by region. Please check with the Nokia dealer nearest to you.



1. INTRODUCTION

This guide briefly describes how to begin using Nokia Content Copier.

The Nokia Content Copier consists of the following features:

- Enables the copying of data between two Nokia phones (described later in this document)
 - Phone book (names and numbers), Caller Groups
 - Profiles
 - Ease of use items (I e Any key answer)
 - Calendar
 - WAP settings, Messages, Advanced Functions etc. depending on the phone model used
- Sends back-up data on your Nokia phone to a PC, and then restores it to your phone
 - Phone book (names and numbers), Caller Groups
 - Profiles
 - Ease of use items (I e Any key answer)
 - Calendar
 - WAP settings, Messages, Advanced Functions etc. depending on the phone model used
- Erases data from your phone (only from the Nokia 6310i)

2. SYSTEM REQUIREMENTS

To install and run the Nokia Content Copier, you need:

- An Intel-compatible PC equipped with Windows 98/ME/ 2000/XP, Windows NT 4 with SP 5 or later (only cable connection)
- At least 40 MB of free disk space
- For connection between the Nokia 6310i and a PC you need a compatible infrared port/DLR-3P cable (Windows NT 4 only cable connection)

The Nokia Content Copier supports the following Nokia phones

Nokia 6250/Nokia 7110	Infrared connection/the DLR-3P serial cable
Nokia 5210/Nokia 6500/Nokia 6510/Nokia 8210/Nokia 8310/Nokia 8850/Nokia 8890	Infrared connection
Nokia 6210/Nokia 6310/Nokia 6310i	Infrared connection/the DLR-3P serial cable/Bluetooth



Note: Because the Nokia Connection Manager that comes with Nokia PC Suite 4.81 does not support DAU-9P cable anymore following Nokia phones are not supported anymore by the Nokia Content Copier: Nokia 5110/Nokia 5130/Nokia 6110/Nokia 6130/Nokia 6150



Note: In this guide, all references to personal computers (PC) are also applicable to laptop computers.

3. USING THE NOKIA CONTENT COPIER

1. Exit all Windows programs that could reserve the COM: or IrDA port
2. Start the Nokia Content Copier
3. Follow the instructions on the screen, and note the following:
 - Data can only be transferred *from* the Nokia phone models listed earlier in this document, and the *target* phone can only be the Nokia 6310i. This applies to all actions in the Nokia Content Copier.
 - Also note that screens that are shown below may be different from the screens you see depending on the phone model used for copying data from.

The process of copying data between two Nokia phones is briefly illustrated below:



Figure 1. Connecting source phone and selecting the connection type for it.

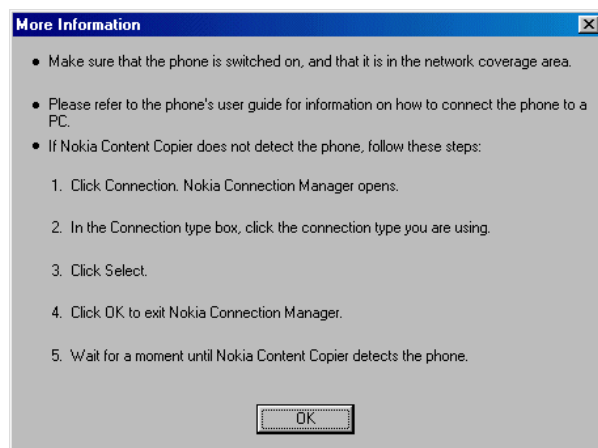


Figure 2. By clicking the *More Information* button you will receive more information about connecting your phone.



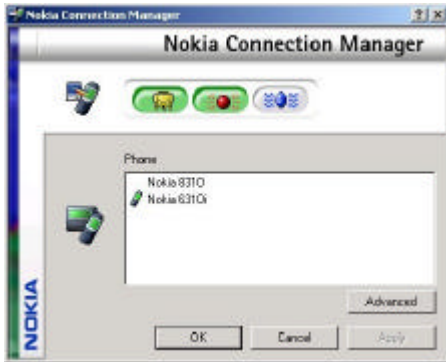


Figure 3. By clicking the *Connection* button in the Nokia Content Copier will open the Nokia Connection Manager. Select the connection type and phone model if several are listed.

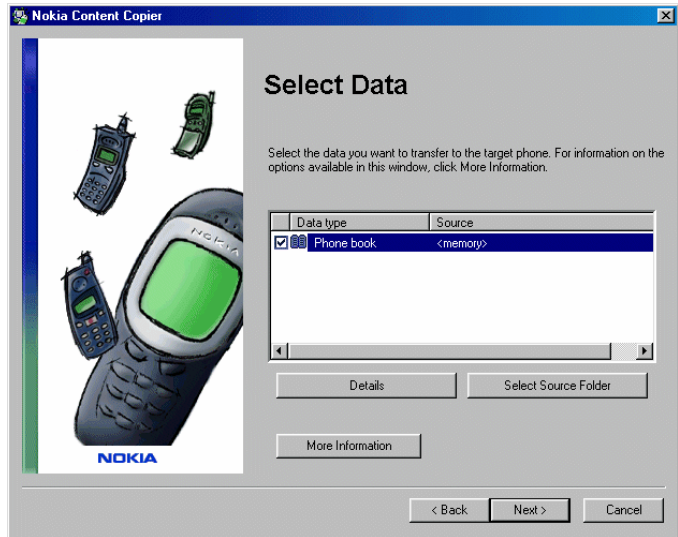


Figure 4. A few steps later, when you begin transferring data to your Nokia 6310i, you will be asked to select the data you want to transfer. You can also edit the *Details* of the Data type as shown in the next figure.

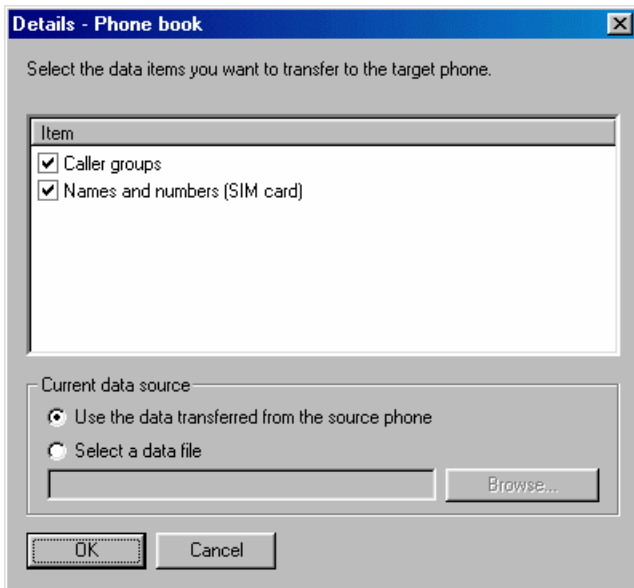


Figure 5. In the Details screen you can select the data items to be transferred to your phone, and if you wish, you can use some old data on your hard disk (must be in compatible .ncc format).